

H U R D U S E W

[www.hurdusew.com](http://www.hurdusew.com)

## DYI INNOVA LIGHT BAR



PATRICK HURD:

[phurd99@gmail.com](mailto:phurd99@gmail.com)

## PARTS NEEDED

### **All the parts were purchased at Home Depot**

Total Cost: 224.51

All parts you can get at Home Depot.

Model # 56920 Internet # 100337876 Store SKU # 797005

1 in. x 96 in. Aluminum Square Tube with 1/20 in.

4 Each \$16.27 /EA-Each

1 in. x 36 in. Aluminum Angle with 1/8 in. Thick

Model # 41880 Internet # 100337545 Store SKU # 470885

1 Each \$9.97 /EA-Each

Model # 18566 Internet # 202249715 Store SKU # 608191

Everbilt 3 in. x 5/8 in. Zinc Plated Corner Braces (4-Pack)

1 Each \$8.79 /BG-Bag

Model # EC3470BA

Hampton Bay Linear Track Kit with 3 GU10-16 Pinhole Cylinders Brushed Steel Finish

2 Each \$59.96

Hampton Bay Linear Track Live End Power Deed with Cord/Switch

Model # EC707WH Internet # 202051399 Store SKU # 555252

1 Each \$9.97 /EA-Each

Hampton Bay Linear Track Lighting Mini Straight Connector

Model # EC702WB Internet # 202051396 Store SKU # 621815

1 Each \$4.97 /EA-Each

Commercial Electric 1 in. x 1 in. Natural Mounting Pad/Base (10-Pack)

Model # 295942 Store SKU # 295942

2 Each \$1.97 /PK-Package

Gardner Bender 4 in. Cable Ties (40-Pack)

Model # 295276 Store SKU # 295276

1 Each \$1.87 /EA-Each

## Tools

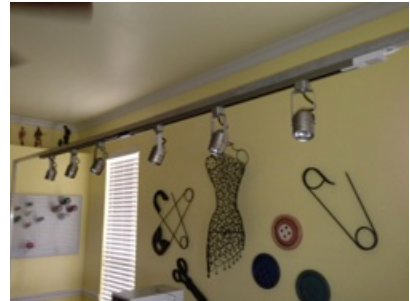
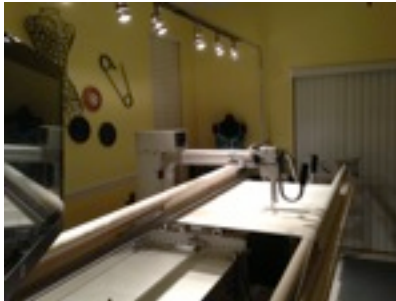
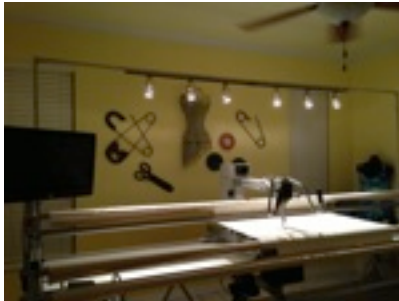
Screw driver

Hack Saw

Drill

Tape Measure

Right Angle ruler

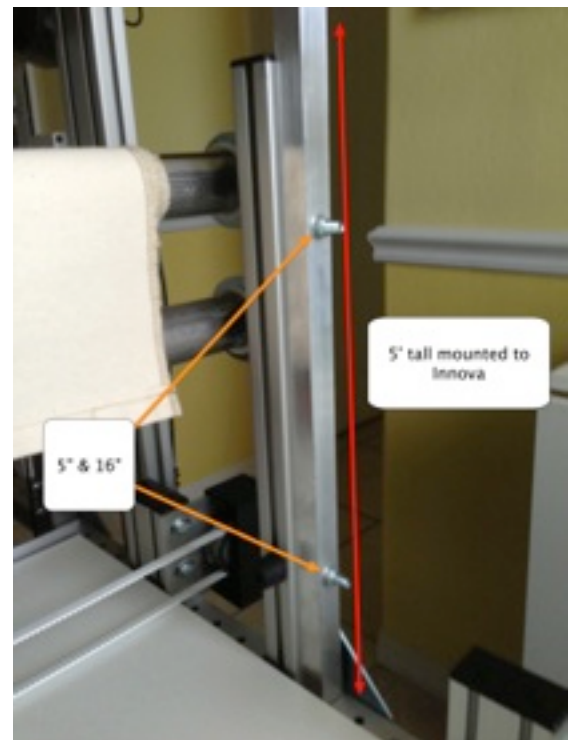


## Instructions.

1. Measure the desired height of lighting. This is totally your choice. I selected 5 feet. You will measure from the bottom of the back leader as the example to the right. Measure up from the red arrow. 5 feet should be just about right for most.  
Using a hack saw cut two of your 8 feet square tubes to 5 feet or the desired height you want.

2. Drill 2 holes from the base of the 5' square pole. Measure first hole should be 5 inches from the base and 16" for second hole. See orange arrows in picture on right. If you have extra bolts from your Innova use them and pre-drill holes large enough to slide through.

You will remove the end cap on the Innova frame, then attach the square tubes to the frame. I found it best to put the bolts on the square tubes first then

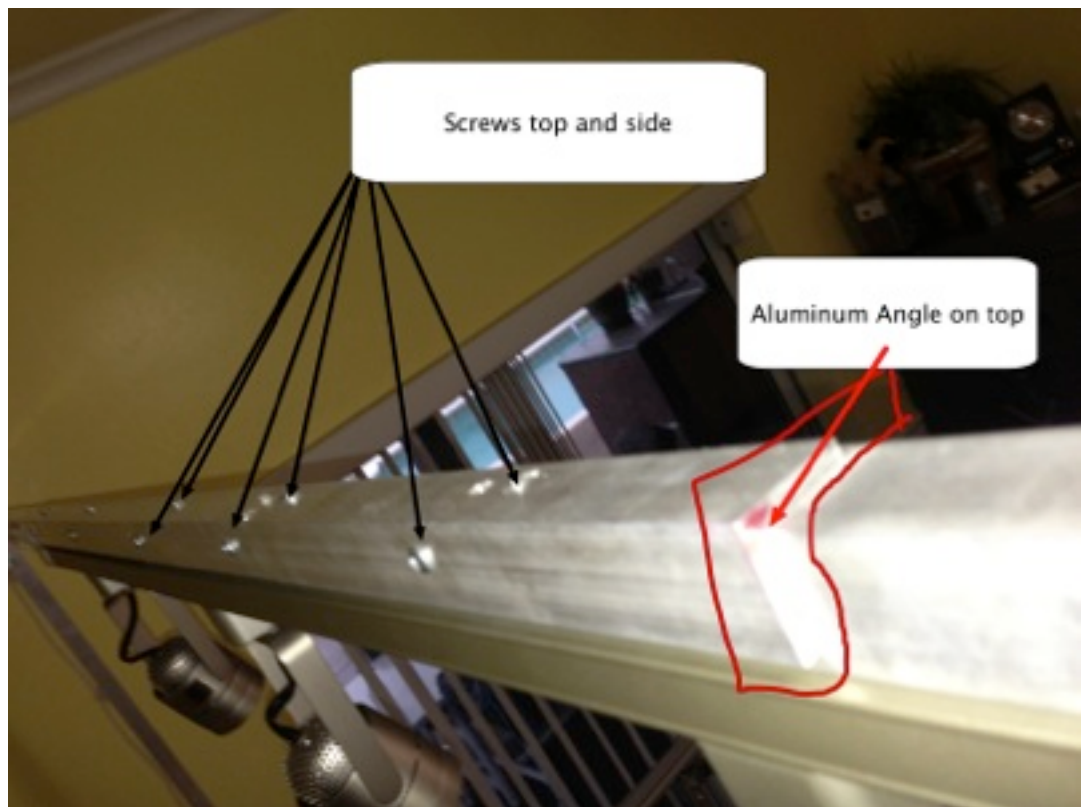


slide them into the slot on the Innova frame. Then tighten them up. Do not over tighten. Do this for the opposite end of the Innova frame as well. Make sure they are 90 degree angel. Use angle ruler to confirm they are at 90 degrees.

At this point you should have two square tubes attached to the back side of the Innova frame extending upwards.

3. Measure the distance between the two square tubes just mounted. Measure from the “inside” of the tube to the “inside” tube on the opposite side. On a 12 foot Innova, it should be approximately 139 inches. Measure carefully for accuracy.

4. You will now join your last 8 foot square tubes to make the total measurement above. In my case the inside measurement above was 139”, therefore used one square tube at 96” and cut a 2nd square tube to 43”.



*NOTE: Use a hack saw to cut the aluminum square bars keep the cut as straight as possible.*

Lay the two aluminum square tubes together to give the full length needed. Lay the 1” x 36” Aluminum Angle (SKU # 470885) on the top. You will be using this to join the two pieces together to secure as one long piece. It will be on top and will not be seen. You need to pre-drill holes in this Aluminum Angle piece and into the square tubes. I did 5 screws on the top

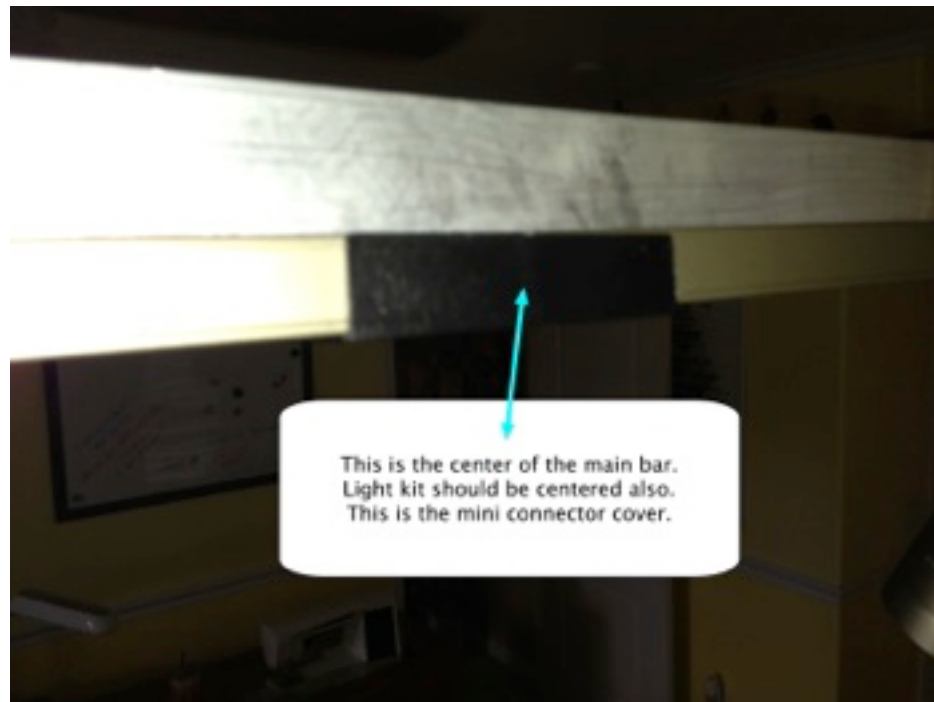
and 5 screws on the back side.

*Note: You want to drill the holes large enough that the screws grab, but not so small they are difficult to screw into the aluminum. Try a drill bit on a spare square tube to get the right drill bit to match your screws.*

5. Once you have the two square aluminum square tubes together, you will be mounting the light kit. The light kit will be mounted on the bottom side or opposite side of the Aluminum Angle. I used the Mini Straight Connector to join the two Track Kit together then lay it on the square aluminum square to mark next pre drill points.

*NOTE: If you can find a 8' brushed steel finish track, you will not need the mini connector. I could not find any.*

Mark the center of the aluminum square tubes.



Then place the lighting kit center, which gives you 4' on each side. Mark your pre-drills holes for the lighting kit. There will be 2 in each track for a total of 4. Mount only the track, and not the lights or Power Deed with Cord/Switch on yet.

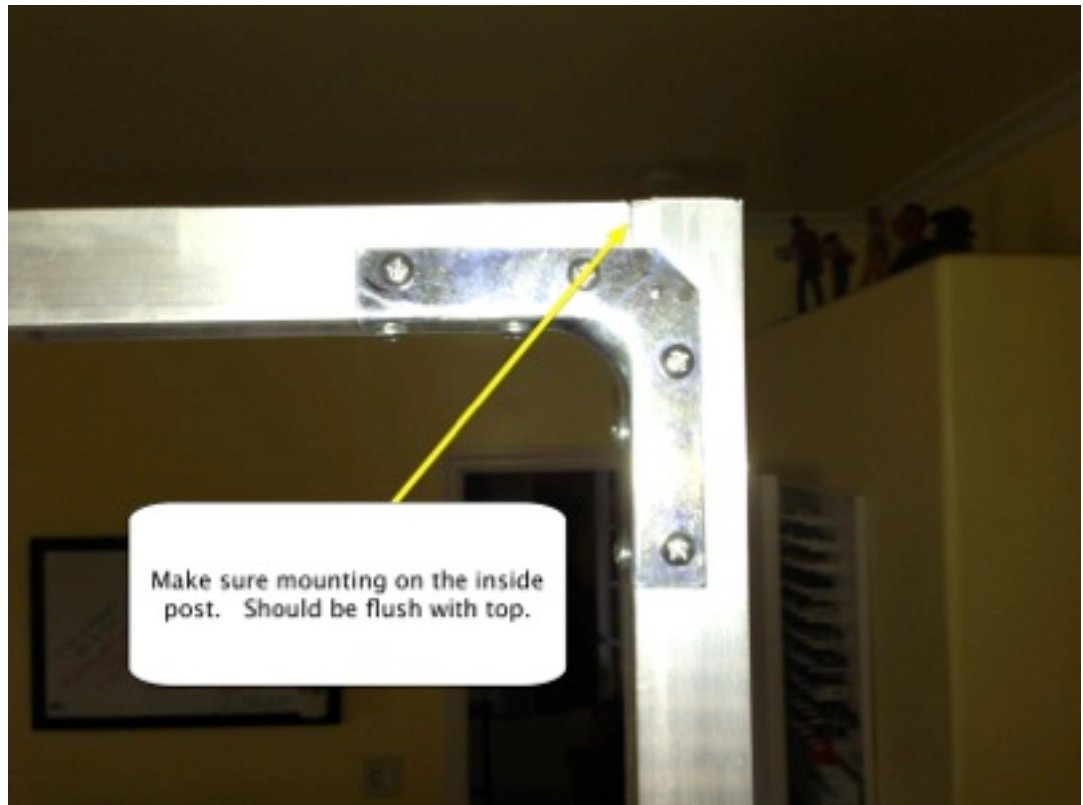
6. Next step will require a second hand. You will mount the aluminum square tubes with light track across the to upright aluminum square tubes mounted earlier.

We will use the Zinc Plated Corner Braces (SKU # 608191) to connect the aluminum square tubes. You will want to place this on the back side of the light bar. We don't want anything to show on the front, so to keep it nice and clean.

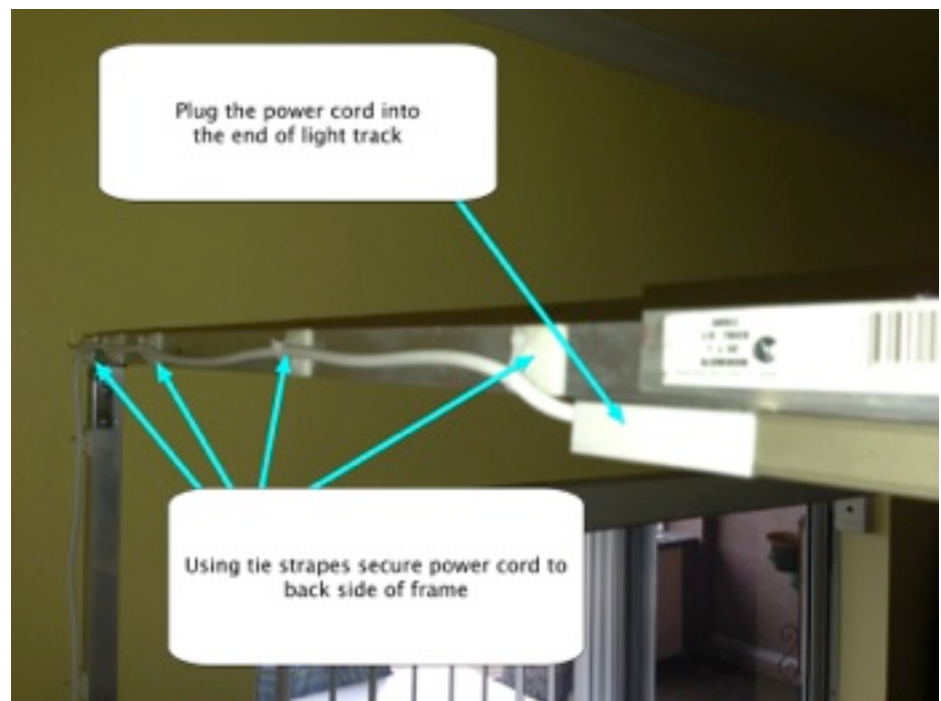
While holding the aluminum square tubes in place mark your pre-drill holes. You want this flush with the top of the tubes. Your aluminum square tubes with light track will be on the in-



side of the upright aluminum square tubes. You should have a total of 8 holes to drill for each side. Again, drill the holes large enough that the screws grab, but not so small that you break a screw head.



7. Once the top bar is mounted we can now start putting the light power cord Power Deed with Cord/Switch (SKU # 555252) in. I use this power cord instead of the hardware that came with the light kit, because it is small and keeps the appeal of the whole frame. If you use the light kit hardware, you will have a big box here,



which is not as nice. Also, Power Deed with Cord/ comes with a on/off switch.

Using the Natural Mounting Pad/Base (SKU # 295942) on the back side of the frame to secure Cable Ties (SKU # 295276). Run the Pads across and down the aluminum square tubes. Use as many as needed to keep the power cord hidden from view and tight.

Run the cable down to the bottom of the frame. Make sure to keep away from any movable parts or

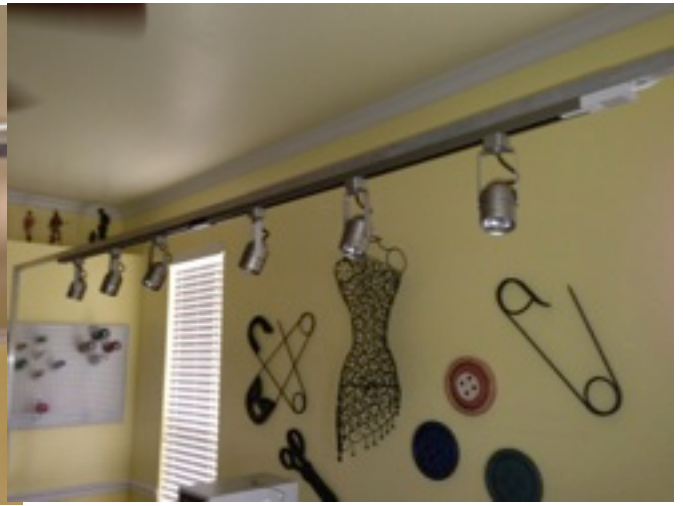


gears. Using cable ties, run the switch to the location you want. I have it mounted on the front bottom of the frame. I then have a power cord that plugs into this switch and returns to the back side of the . I also use cable ties to tie up and keep neat.

Last step will be to put you lights in and adjust to your liking. The lights are a simple twist and turn to put in. Follow lighting kit instructions.

8. If all goes wells, you should now be ready to test your lights. You should now have a nice looking light bar with no cables showing and on off switch that is easy to get to.

More pictures below that should help visualize everything. Also see You Tube video that will help. [http://youtu.be/\\_8m93jjiATw](http://youtu.be/_8m93jjiATw)



HURDuSEW

DYI INNOVA LIGHT BAR